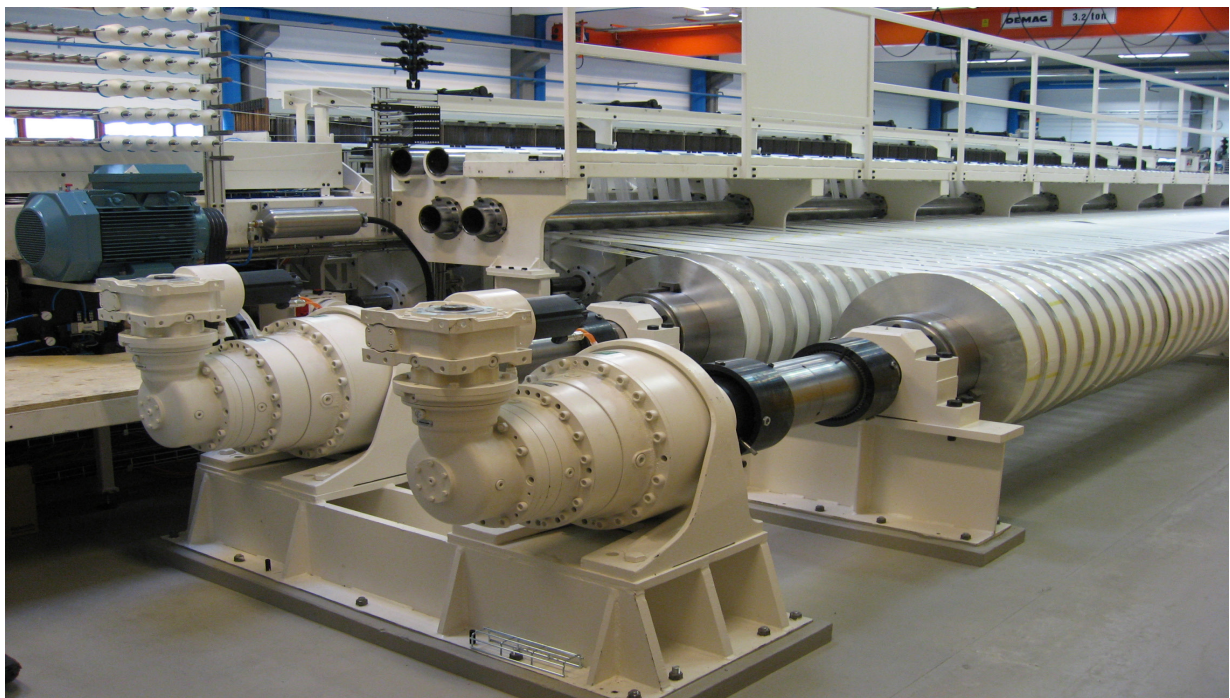
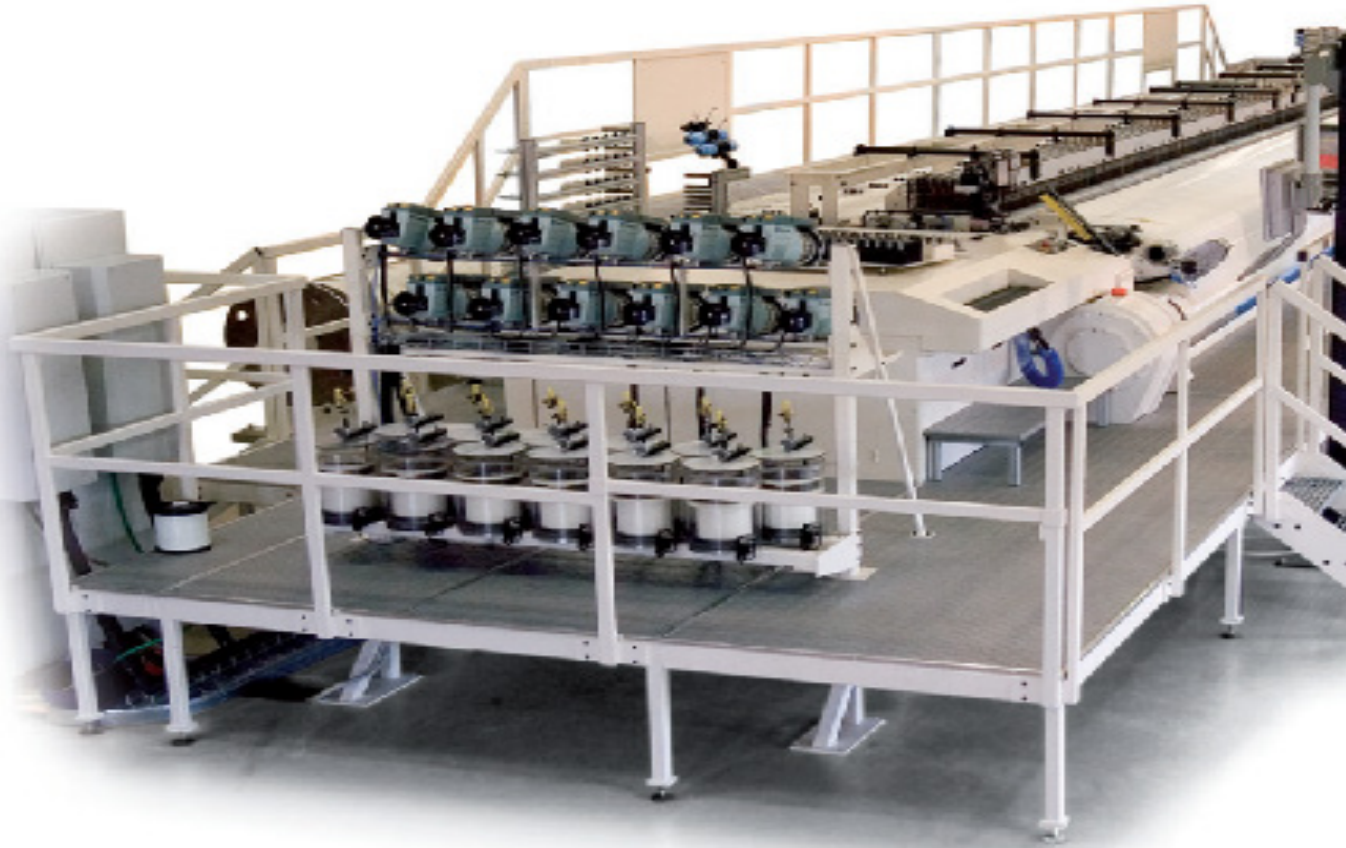


WORLD WIDE WEAVING MACHINES

# TCR

**TEXO**®

TCR High Speed Loom  
for production of forming fabric





Max. weaving width: Up to 15.5 meter

Total machine width: Weaving width + 9 meter

Total machine height: 2,7 meter incl. foundation

Total machine depth: 7,4 meter including weaver's bridge, wind-up and two warp beams

Loom speed: 100 picks/minute for 15 meter weaving width

Max. warp tension: 1500 kg/meter

Max. beat-up tension: 3000 kg/meter

DOBBY: TEXO DISCO, Bosch-Rexroth AC servo

Max dobbie capacity: 56 harness frames with 12 mm pitch

Loom drive: TEXO TDD, Bosch-Rexroth AC servo

Weft insertion system: Middle transfer rapier

Max wefts: 12 wefts presenters

Weft diameter span: 0,08 - 0,60 mm

TCR is a high-speed loom developed specifically for the production of Forming fabric.

TCR is developed from very well-known technology such as:

- TEXO band rapier with its "POZI-GRIP" system
- TEXO rapier guide with separate motion from the lay for low beat up point on the reed
  - TEXO "DISCO" Dobby system
  - TEXO Direct Drive "TDD"
  - Loom Control system "LoCoMo III"

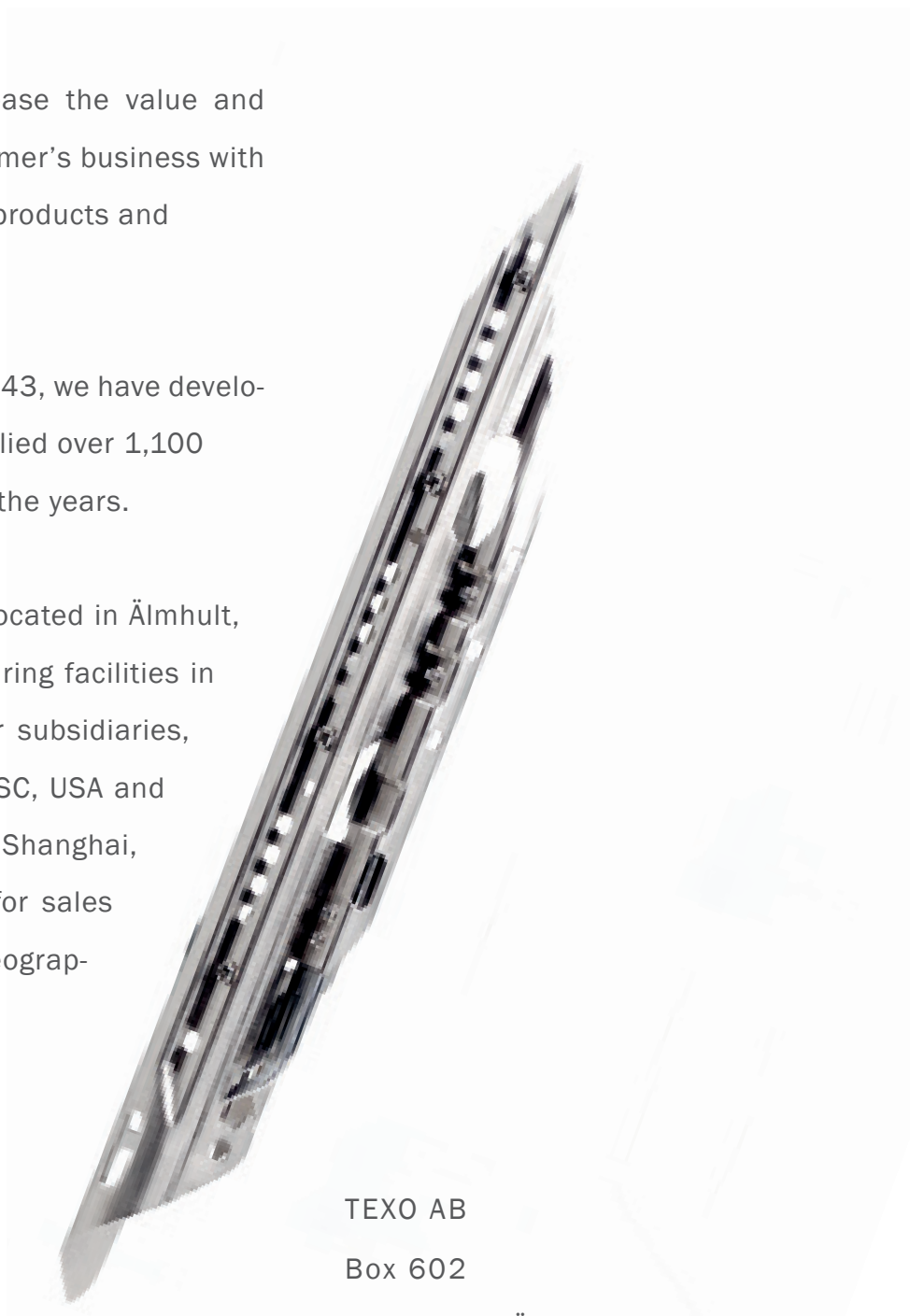
and many other high "tech" features developed by TEXO through many years of experience in the industry.

# WORLD WIDE WEAVING MACHINES

TEXO's goal is to increase the value and profitability of our customer's business with the help of customized products and comprehensive service.

Since our founding in 1943, we have developed, designed and supplied over 1,100 weaving machines over the years.

TEXO's headquarter is located in Älmhult, Sweden with manufacturing facilities in Sweden and China. Our subsidiaries, TEXO Inc. in Greenville SC, USA and TEXO Pacific Co., Ltd in Shanghai, China are responsible for sales and support in their geographical areas.



TEXO AB  
Box 602  
SE-343 24 Älmhult  
Tel: +46 476-560 00  
E-mail: [sales@texo.se](mailto:sales@texo.se)  
[www.texo.se](http://www.texo.se)

