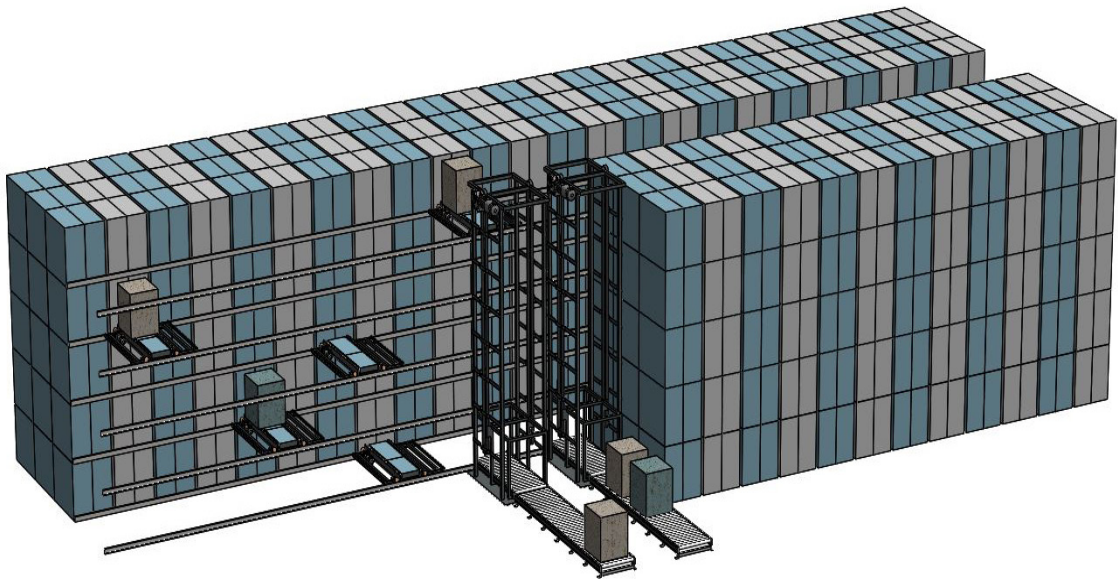


TEXO Warehouse Solutions

Ymer™

Automated Storage and Retrieval System



The Ymer system is designed & manufactured in Älmhult, in the heart of Sweden.



We are

Introduction

TEXO Ymer is a multi-deep, fully automated, high density storage and retrieval system. The system can be adapted to any warehouse regardless of size, capacity or shape.

Operation

The TEXO Ymer system consists of Ymer elevators, transfer carts with satellites, a specially designed racking system, and the Verdandi WES.

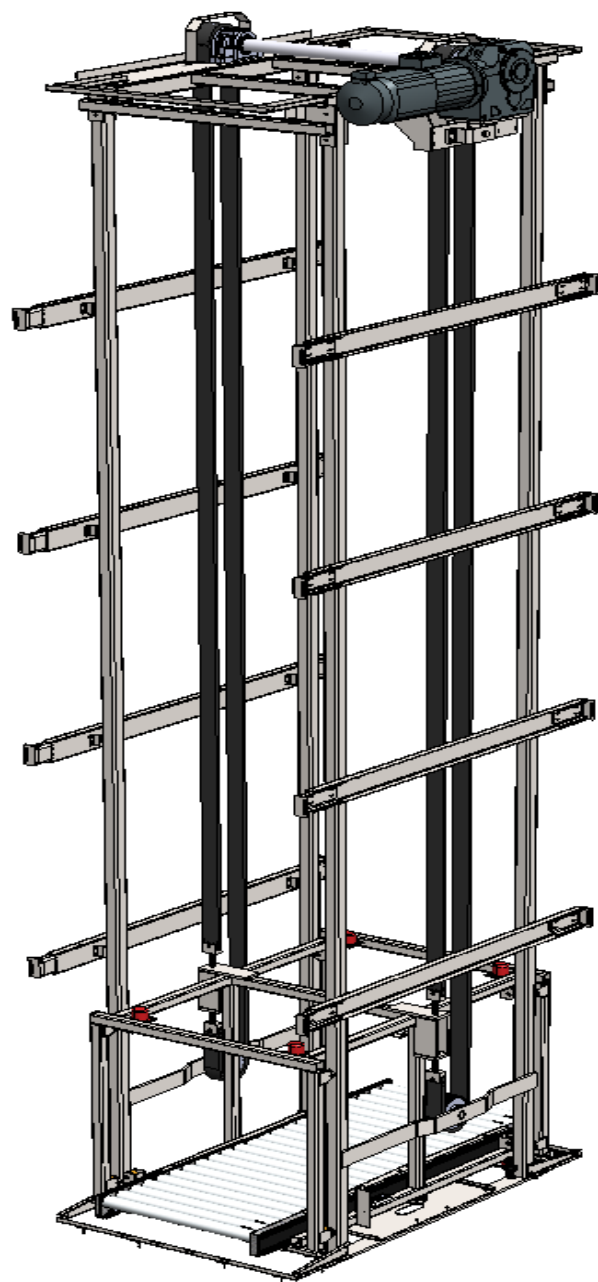
TEXO Ymer communicates with your MES or ERP system to receive information on what to store and what to retrieve. The system will decide where to store goods based on frequency and occupancy rate. Stored goods, both in and outbound, can easily be seen and located in the client HMI as well as stock overview over a certain code number.

Goods of different lengths can be stored in the same lane. FIFO functionality can be accomplished with an automatic reshuffling function.

The system can be designed to handle different sizes and multiple goods at the same time.

Table of contents

Introduction	2
Operation	2
Benefits	4
Scalable Capacity	4
Verdandi WES System	5



Ymer Elevator

Benefits

- Less cost due to optimal use of your warehouse size
- Improved quality due to safe handling of your goods
- Faster throughput due to 24/7 reliable and efficient material flow
- Scalable system adaptability to any warehouse shape, different goods size/weight, and in ambient, chill or freezer environment
- Better safety and ergonomics for co-workers due to a fully automatic system, including WES, capable of interfacing with your MES/ERP system



Ymer Elevator with goods

Scalable Capacity

The Ymer System can be built for your required pallet positions and sizes. The system is very versatile due to its unique design taking up minimum of floor space while maintaining maximum capacity. It can also be adapted to irregular formed warehouses.

In order to meet different capacity requirements, the system is expandable. This means that by increasing the number of elevators and transfer carts, your throughput will increase. By expanding the racking, your storage capacity increases as well. The standard max weight is 1,000 kg per meter unit load.

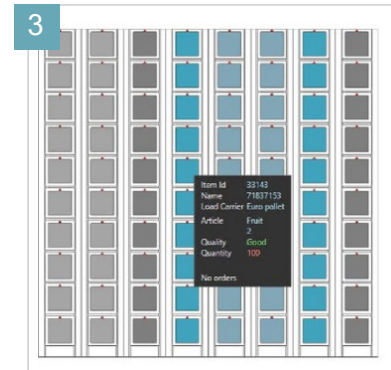
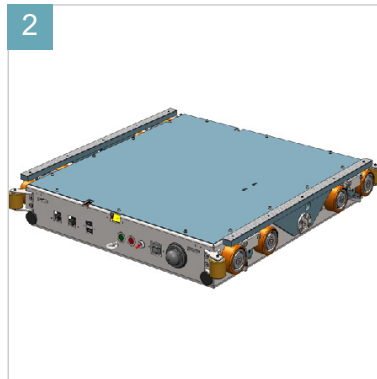
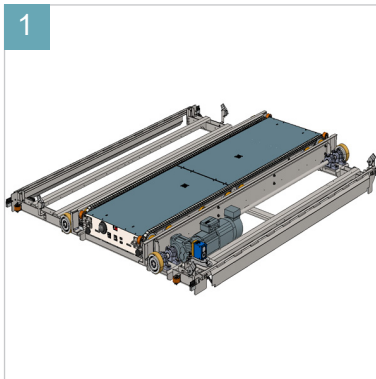
Verdandi WES Software

The Verdandi WES is a warehouse execution software that stores the information on the different products that are being stored. With the Verdandi WES, you set the rules of the different products and with these settings the system knows where to store and to send the products.

The Ymer system is fully automatic with Verdandi WES.

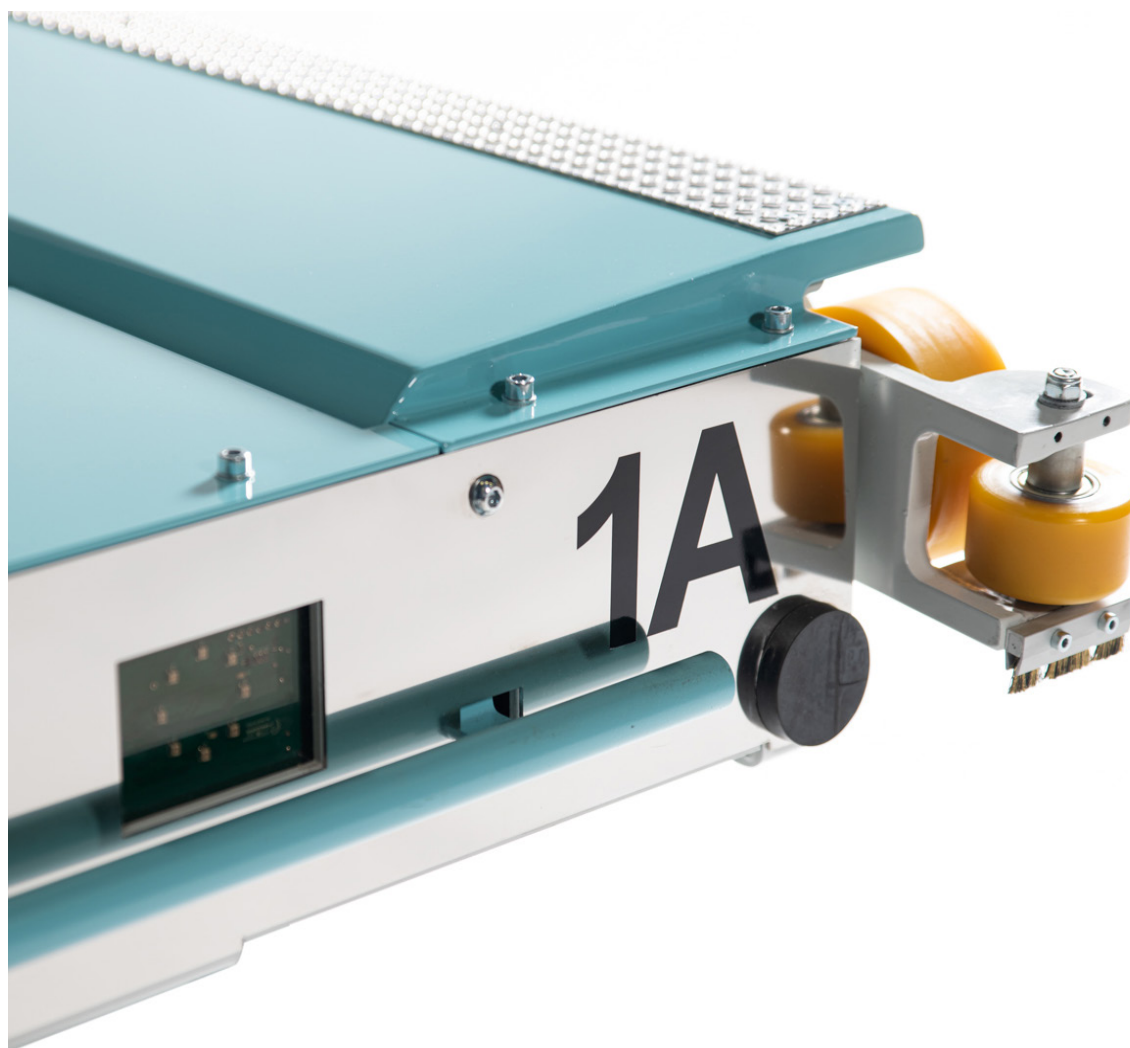
We use information from your MES, ERP, machine integrations, RFID tags or barcode to determine what kind of goods and quantity is on a pallet.

The Verdandi shows every action happening inside the system. A user friendly interface makes it very easy to use.



*From left:
Ymer Transfer cart
Ymer Satellite
Verdandi WES Software*

TEXO Warehouse Solutions



TEXO AB

Box 602 SE-343 24 Älmhult

Tel: +46 476-560 00

E-mail: sales@texo.se

www.texo.se



We are

© 2021 TEXO Aktiebolag. All rights reserved.